

2017 Part D Standard Plan Cost-Sharing*

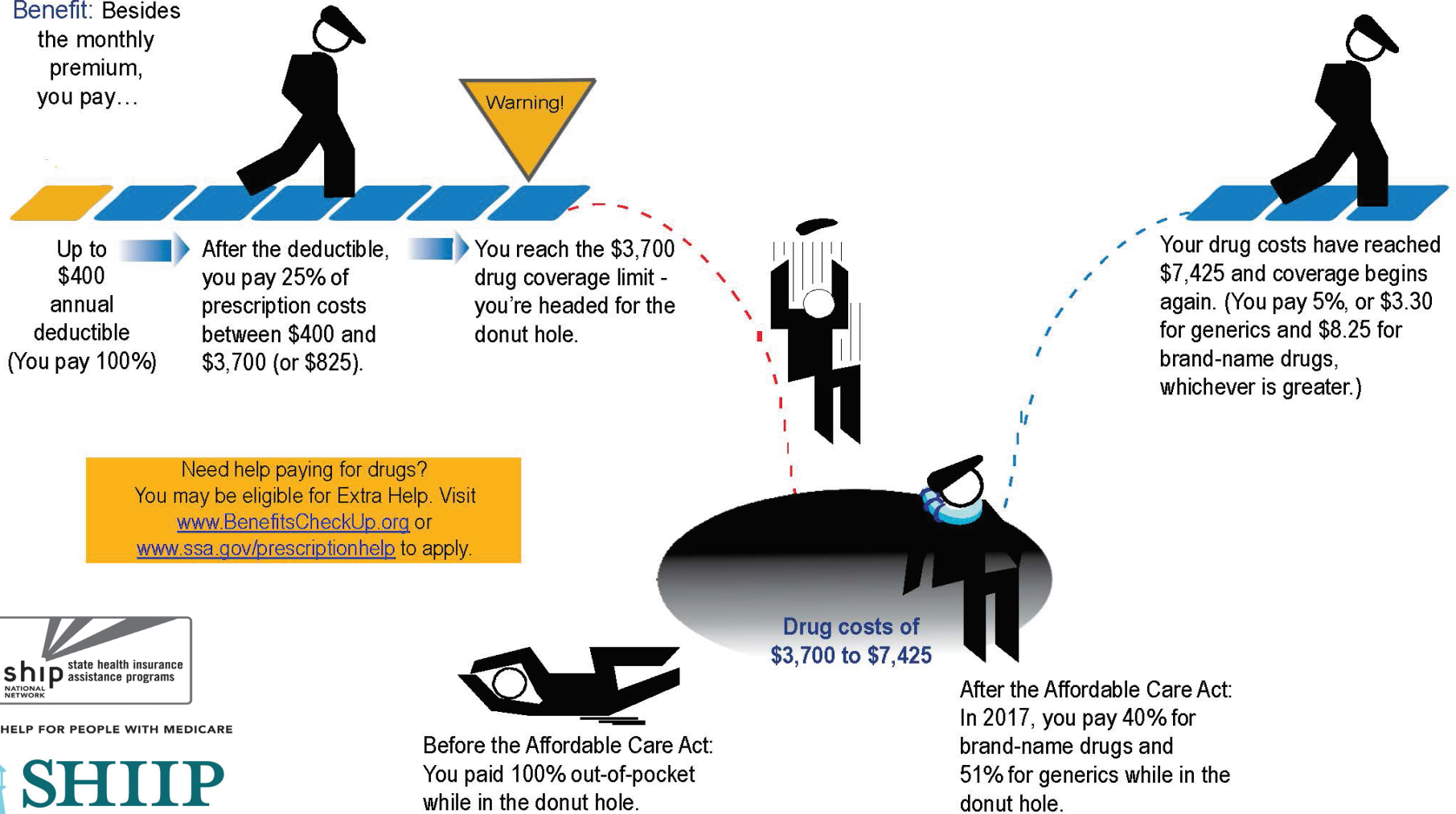
Part D Benefit Cost Periods	Costs and Who Pays	Beneficiary Pays (TrOOP)	Plan Pays	Total Amount Spent on Plan-Covered Drugs
Initial Deductible	Beneficiary pays 100%.	Up to \$400	\$0	\$400 (Amount spent on deductible before ICP begins)
Initial Coverage Period (ICP)	Costs of covered drugs are shared: 25% by beneficiary, 75% by plan.	Up to \$925	\$2,775	\$3,700 (Amount spent during ICP before Coverage Gap begins)
Coverage Gap (“Donut Hole”)	<p>Discounts in 2017: Costs of plan-covered drugs are shared:</p> <ul style="list-style-type: none"> Beneficiary pays 51% for generic drugs, 40% for brand-name drugs, plus 45% of the pharmacy dispensing fee (approx. \$1-\$3). Plan pays 49% for generic drugs and 10% for brand-name drugs. Drug manufacturer provides 50% discount on brand-name drugs. <p>Important Note about True Out-of-Pocket (TrOOP) costs: The total amount spent in the Coverage Gap (up to \$3,725) includes:</p> <ul style="list-style-type: none"> the drug costs paid by the beneficiary, and the 50% discount on brand-name drugs paid by the drug manufacturer. <p><u>Payments made by the plan</u> during the Coverage Gap (49% on generics, 10% on brand-name drugs) do <u>not</u> count toward TrOOP.</p>			<p>Coverage Gap begins once reach the Initial Coverage Limit.</p> <p>\$3,700 - Initial Coverage Limit (Total amount spent on any initial deductible and during the ICP).</p> <p>Up to \$3,725 (Total amount spent during the Coverage Gap)</p> <p>\$7,425 (Total amount spent during ICP and Coverage Gap, before Catastrophic Benefit Period begins)</p>
Catastrophic Benefit Period	<p>Costs of covered drugs are shared:</p> <p>Beneficiary pays reduced copay/coinsurance; plan pays the difference.</p>	<p>Greater of: 5% coinsurance OR \$3.30 copay for generic, \$8.25 copay for brand or non-preferred.</p>	Any remaining portion of the negotiated drug price.	<p>Beneficiary will remain in the Catastrophic Benefit Period through Dec. 31, 2017. Part D benefit will reset on Jan. 1, 2018, starting again with a deductible.</p>

*Most Part D plans are not standard plans. This means calculating TrOOP (True Out-of-Pocket) costs during the deductible and Initial Coverage Limit periods for beneficiaries varies by plan.

Contact SHIIP at 1-800-259-5300

MEDICARE PART D PRESCRIPTION DRUG BENEFIT IN 2017

Medicare's Basic Benefit: Besides the monthly premium, you pay...



LOCAL HELP FOR PEOPLE WITH MEDICARE

